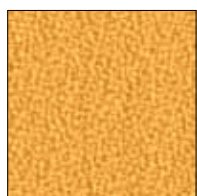


**zÜCO**  
King . King Plus . Aquarius

# Aquarius



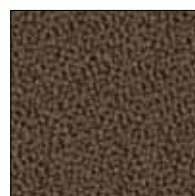
**Aquarius** SK1  
45.03



**Aquarius** SK1  
45.04



**Aquarius** SK1  
45.50



**Aquarius** SK1  
45.60



**Aquarius** SK1  
45.67



**Aquarius** SK1  
45.40



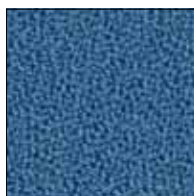
**Aquarius** SK1  
45.42



**Aquarius** SK1  
45.45



**Aquarius** SK1  
45.23



**Aquarius** SK1  
45.25



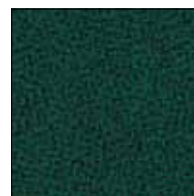
**Aquarius** SK1  
45.20



**Aquarius** SK1  
45.11



**Aquarius** SK1  
45.14



**Aquarius** SK1  
45.15



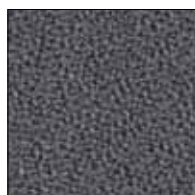
**Aquarius** SK1  
45.22



**Aquarius** SK1  
45.10



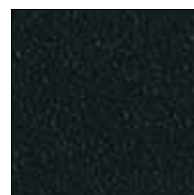
**Aquarius** SK1  
45.12



**Aquarius** SK1  
45.30

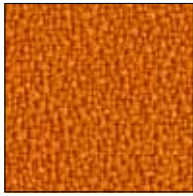


**Aquarius** SK1  
45.36



**Aquarius** SK1  
45.33

## King



King SK1  
81.44



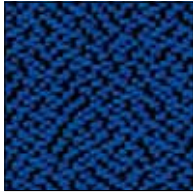
King SK1  
81.41



King SK1  
81.40



King SK1  
81.21



King SK1  
81.20



King SK1  
81.22



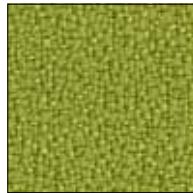
King SK1  
81.42



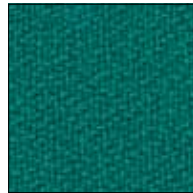
King SK1  
81.24



King SK1  
81.30



King SK1  
81.13

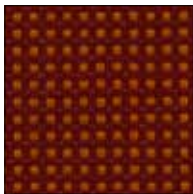


King SK1  
81.11



King SK1  
81.33

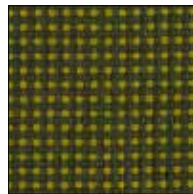
## King Plus



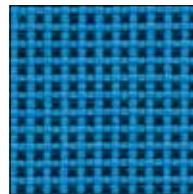
King Plus SK1  
84.44



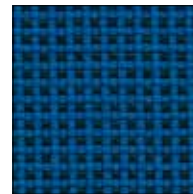
King Plus SK1  
84.40



King Plus SK1  
84.11



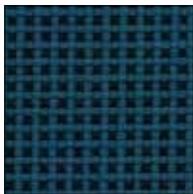
King Plus SK1  
84.21



King Plus SK1  
84.22



King Plus SK1  
84.33



King Plus SK1  
84.30

Züco Bürositzmöbel AG  
CH-9445 Rebstein  
Tel. +41 (0) 71 775 87 87  
Fax +41 (0) 71 775 87 97  
mail@zueco.com  
www.zueco.com

Dauphin Humandesign® Company



**King Stoffklasse 1**  
100 % Polyester Trevira CS  
Breite: 140 cm, Gewicht: 410 g/lfm  
Lichtechtheit: min. 5 (ISO 1-8)  
Scheuerfestigkeit: 100'000 Martindale  
EN 1021 1&2, NF P 92-503/504 M1

**King Plus Stoffklasse 1**  
100 % Polyester Trevira CS  
Breite: 140 cm ± 2 % ohne Webkante  
Gewicht: 365 g/lfm  
Lichtechtheit: 6 (ISO 105-B02)  
Scheuerfestigkeit: 70'000 Martindale  
DIN EN 1021/1-2; IMO A-652 (16);  
BS 7176 Medium Hazard; CRIB 5; M1; B1; C1

**King Catégorie de tissu 1**  
100 % Polyester Trevira CS  
Largeur: 140 cm, Poids: 410 g/lfm  
Solidité à la lumière: min. 5 (ISO 1-8)  
Resistance à l'abrasion: 100'000 Martindale  
EN 1021 1&2, NF P 92-503/504 M1

**King Plus Catégorie de tissu 1**  
100 % Polyester Trevira CS  
Largeur: 140 cm ± 2 % sans selvage  
Poids: 365 g/lfm  
Solidité à la lumière: 6 (ISO 105-B02)  
Resistance à l'abrasion: 70'000 Martindale  
DIN EN 1021/1-2; IMO A-652 (16);  
BS 7176 Medium Hazard; CRIB 5; M1; B1; C1

**King Fabric class 1**  
100 % Polyester Trevira CS  
Width: 140 cm, Weight: 410 g/lfm  
Light Fastness: min. 5 (ISO 1-8)  
Abrasion Resistance 100'000 Martindale  
EN 1021 1&2, NF P 92-503/504 M1

**King Plus Fabric class 1**  
100 % Polyester Trevira CS  
Width: 140 cm ± 2 % without salvage  
Weight: 365 g/lfm  
Light Fastness: 6 (ISO 105-B02)  
Abrasion Resistance 70'000 Martindale  
DIN EN 1021/1-2; IMO A-652 (16);  
BS 7176 Medium Hazard; CRIB 5; M1; B1; C1



**Aquarius Stoffklasse 1**  
100 % Schurwolle  
Breite: 140 cm ± 2 % ohne Webkante  
Gewicht: 370 g/m<sup>2</sup>  
Lichtechtheit: min. 5 (ISO 105-B02)  
Scheuerfestigkeit: 50'000 Martindale  
BS EN 1021 1&2; BS 7176:1995  
Medium Hazard

**Aquarius Catégorie de tissu 1**  
100 % Laine peignée  
Largeur: 140 cm ± 2 % sans selvage  
Poids: 370 g/m<sup>2</sup>  
Solidité à la lumière: min. 5 (ISO 105-B02)  
Resistance à l'abrasion: 50'000 Martindale  
BS EN 1021 1&2; BS 7176:1995  
Medium Hazard

**Aquarius Fabric class 1**  
100 % worsted Wool  
Width: 140 cm ± 2 % without salvage  
Weight: 370 g/m<sup>2</sup>  
Light Fastness: min. 5 (ISO 105-B02)  
Abrasion Resistance 50'000 Martindale  
BS EN 1021 1&2; BS 7176:1995  
Medium Hazard

zueco.ch / 01.11 / 10'000 d/f/e